



Flat 1 3 Park Terrace, Liverpool, L22 3XB

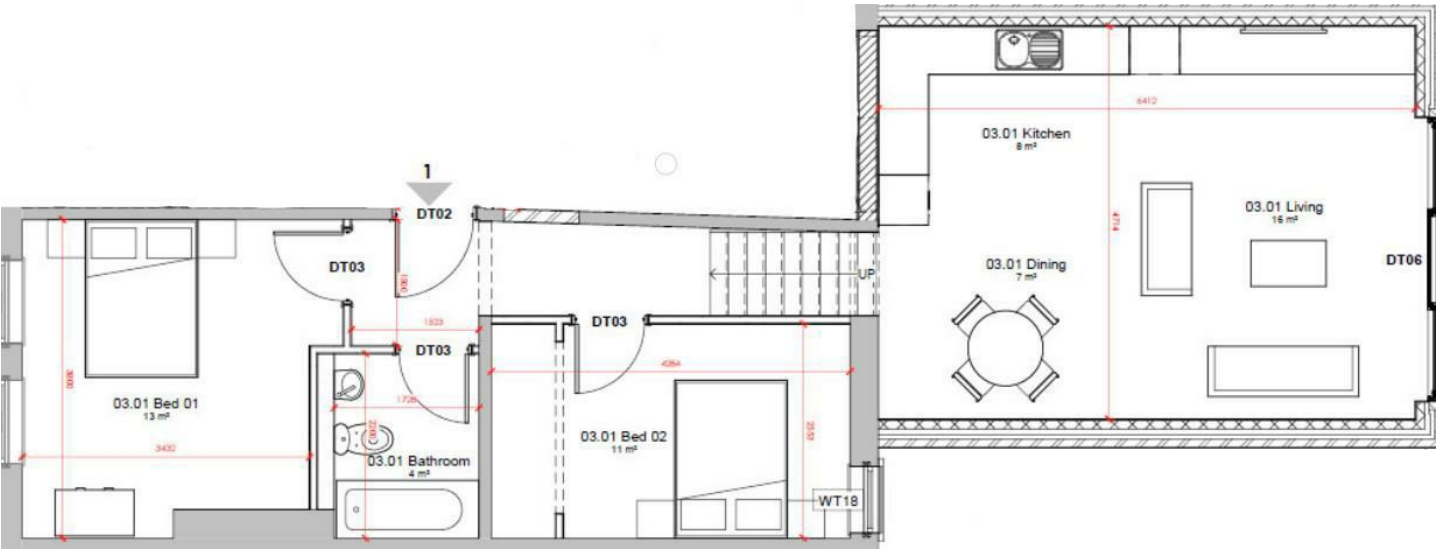
£1,100 Per month

Zero Deposit Option Available

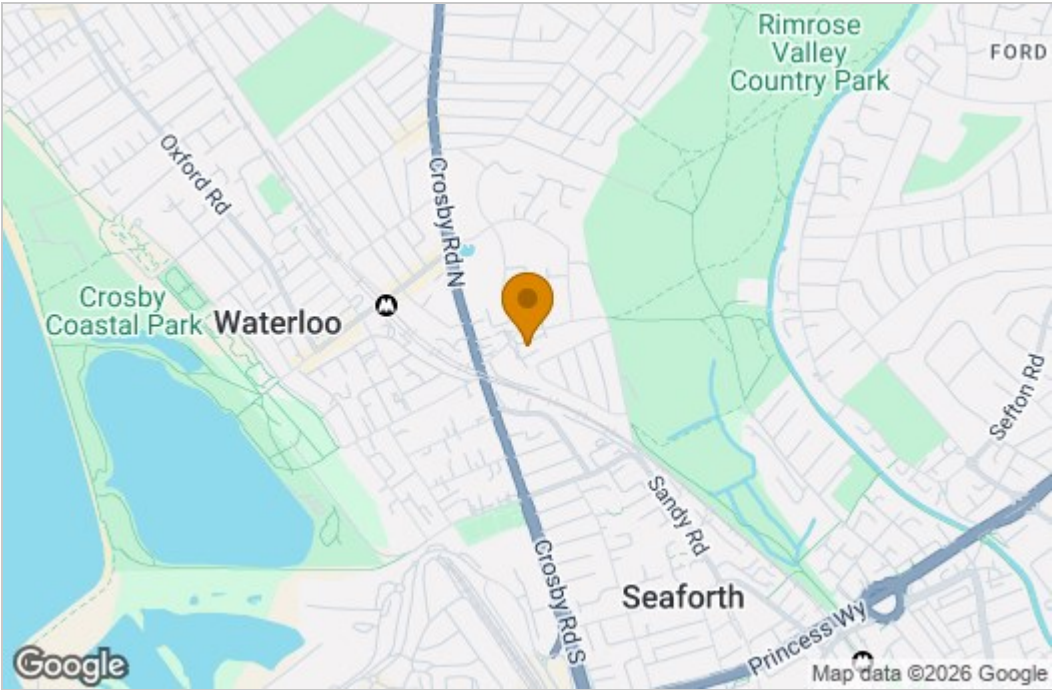
This spacious ground floor apartment benefits from large bi-folding doors opening onto a large private garden with a generous patio and lawned area. The apartment is furnished with high quality furniture, equipped with high quality appliances, and also benefit from residents parking to the front of the property.

Park Terrace is a new conversion of a beautiful character property in this highly sought after area of Liverpool's northern suburbs. This Victorian Terrace consists of two and three bed apartments, benefitting from high ceilings and large windows flooding the rooms with natural light.

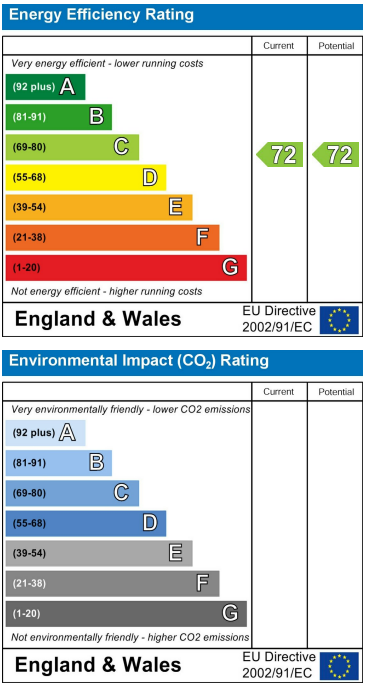
Floor Plan



Area Map



Energy Efficiency Graph



These particulars, whilst believed to be accurate are set out as a general outline only for guidance and do not constitute any part of an offer or contract. Intending purchasers should not rely on them as statements of representation of fact, but must satisfy themselves by inspection or otherwise as to their accuracy. No person in this firms employment has the authority to make or give any representation or warranty in respect of the property.